

NCC Staff Address Locations

Draft analysis outputs

About the Data...

- ▶ Staff address information extracted using the unique field of '**Personal Ref**' from the Council's HR System - iTrent.
- ▶ The data was matched to address information to obtain UPRN and location information (i.e. Easting and Northings)
- ▶ The dataset does not contain any of the School Staff Address information
- ▶ The original dataset size contained **2665 records**
 - ▶ However, some staff records are duplicated due to some staff members having two roles within the authority.
 - ▶ **110** duplicate Personal Refs were identified (totalling 228 rows). These duplicates were removed.
- ▶ Final dataset size = **2547 records**
 - ▶ **In/out Authority area figures**
 - ▶ In Authority = 1497
 - ▶ Out of Authority = 1050

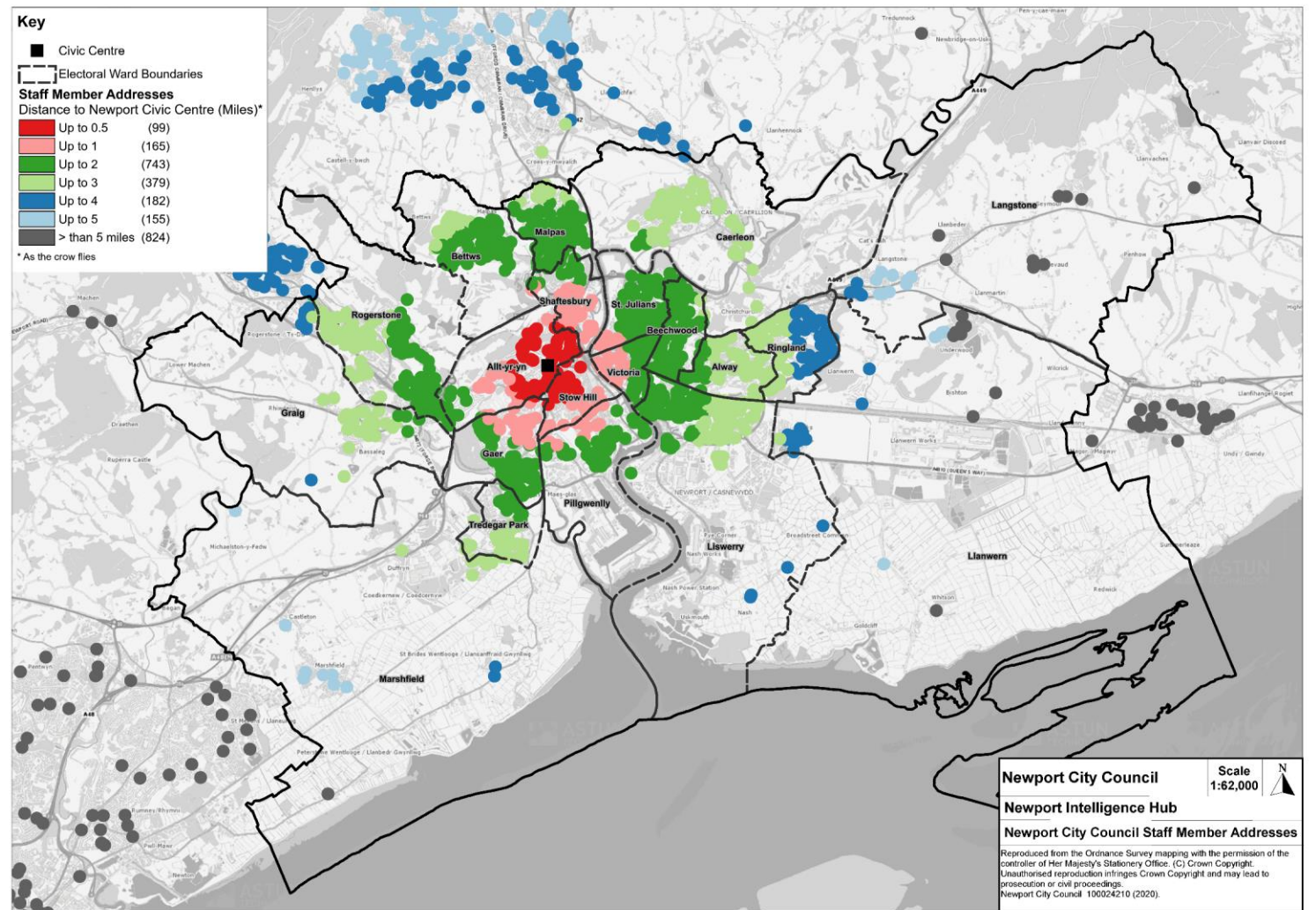
Draft Analysis

All outputs in the following section are draft

Number of staff categorised by distance to the Civic Centre

Distance (within)	Number of Staff
0.5 Miles	99
1 Mile	165
2 Miles	743
3 Miles	379
4 Miles	182
5 Miles	155
6 Miles	90
7 Miles	73
8 Miles	65
9 Miles	80
10 Miles	111
Greater than 10 Miles	405

As the crow flies analysis.



Number of staff per ward

Ward	Number of staff
Allt-yr-yn	92
Alway	73
Beechwood	94
Bettws	103
Caerleon	68
Gaer	94
Graig	46
Langstone	22
Liswerry	141
Llanwern	26
Malpas	118
Marshfield	22
Out of Area	1050
Pillgwenlly	72
Ringland	77
Rogerstone	123
Shaftesbury	70
St. Julians	108
Stow Hill	48
Tredegar Park	42
Victoria	58

